

Messenger G2 network connection

M-Control version 1.34 and higher

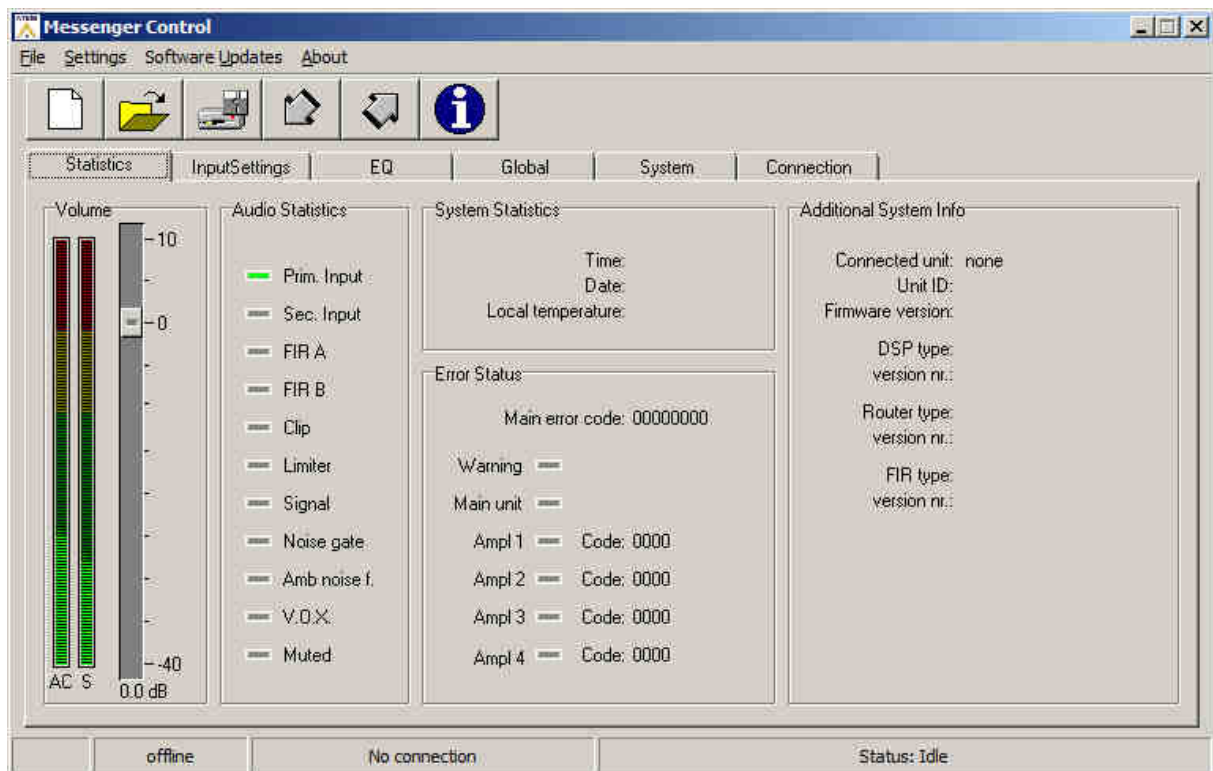


This document is a quick guide to connect to the Messenger G2 based on the M-Control software version 1.34 and higher versions

This document is not intended to be a full complete manual.

The connection between the Messenger and a computer can be made directly with a appropriate network cable or via a local network.

Start M-Control



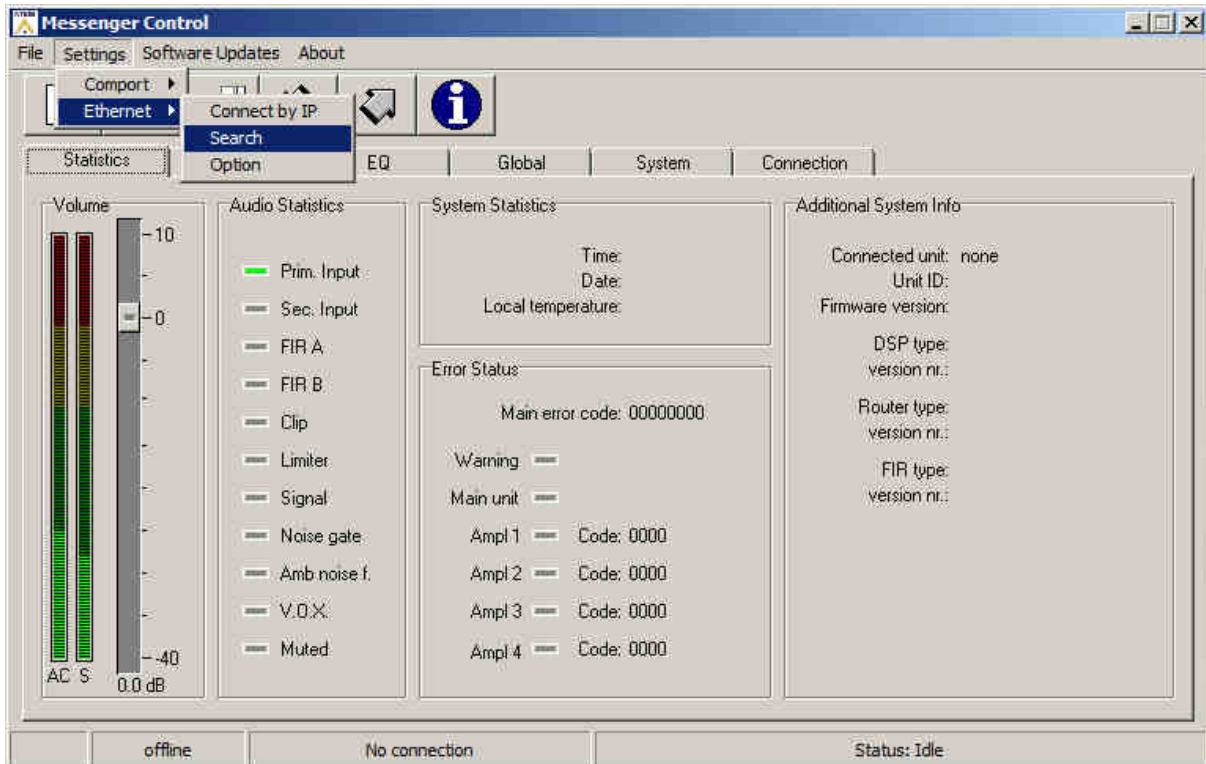
Ateis Europe BV - Sydneystraat 42 - 3047 BP ROTTERDAM – Netherlands
Phone +31 (0)10 2088690 - Fax +31 (0)10 2088699

Messenger G2 network connection

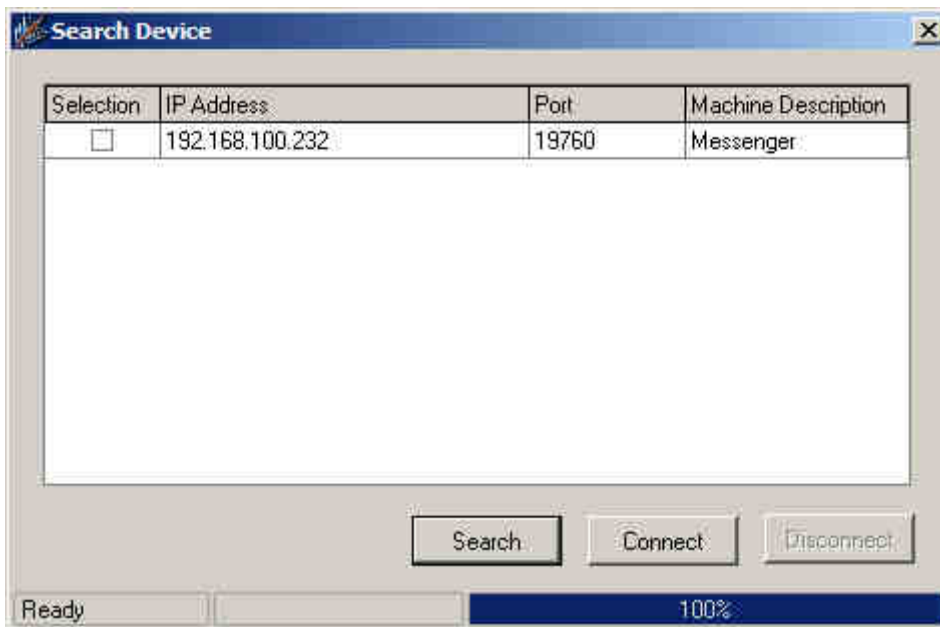
M-Control version 1.34 and higher



Open search for Messenger



Click on search



Look at the found IP adress and set the network card in the computer in the same range. In this case for instance 192.168.100.50

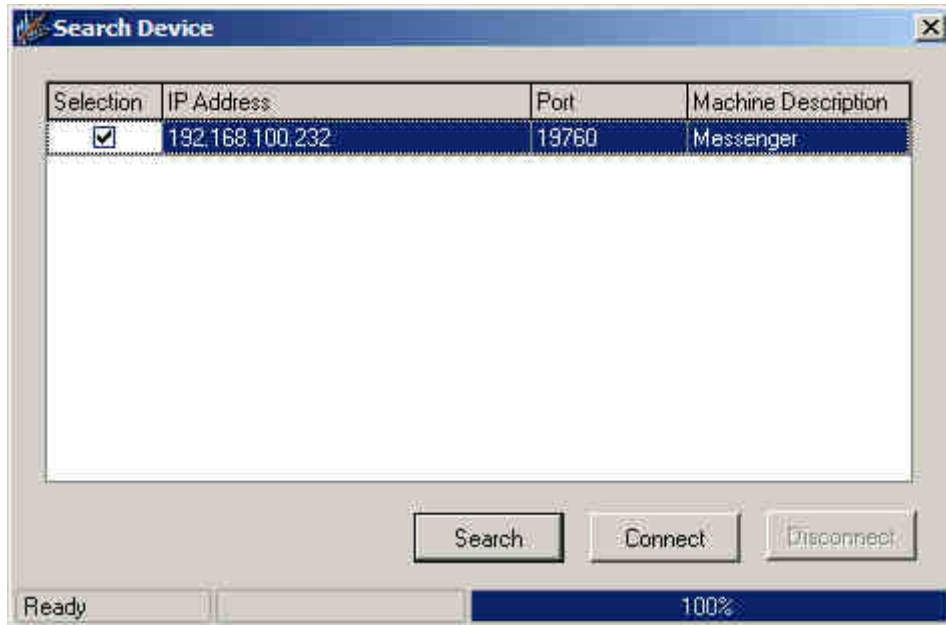
Ateis Europe BV - Sydneystraat 42 - 3047 BP ROTTERDAM – Netherlands
Phone +31 (0)10 2088690 - Fax +31 (0)10 2088699

Messenger G2 network connection

M-Control version 1.34 and higher

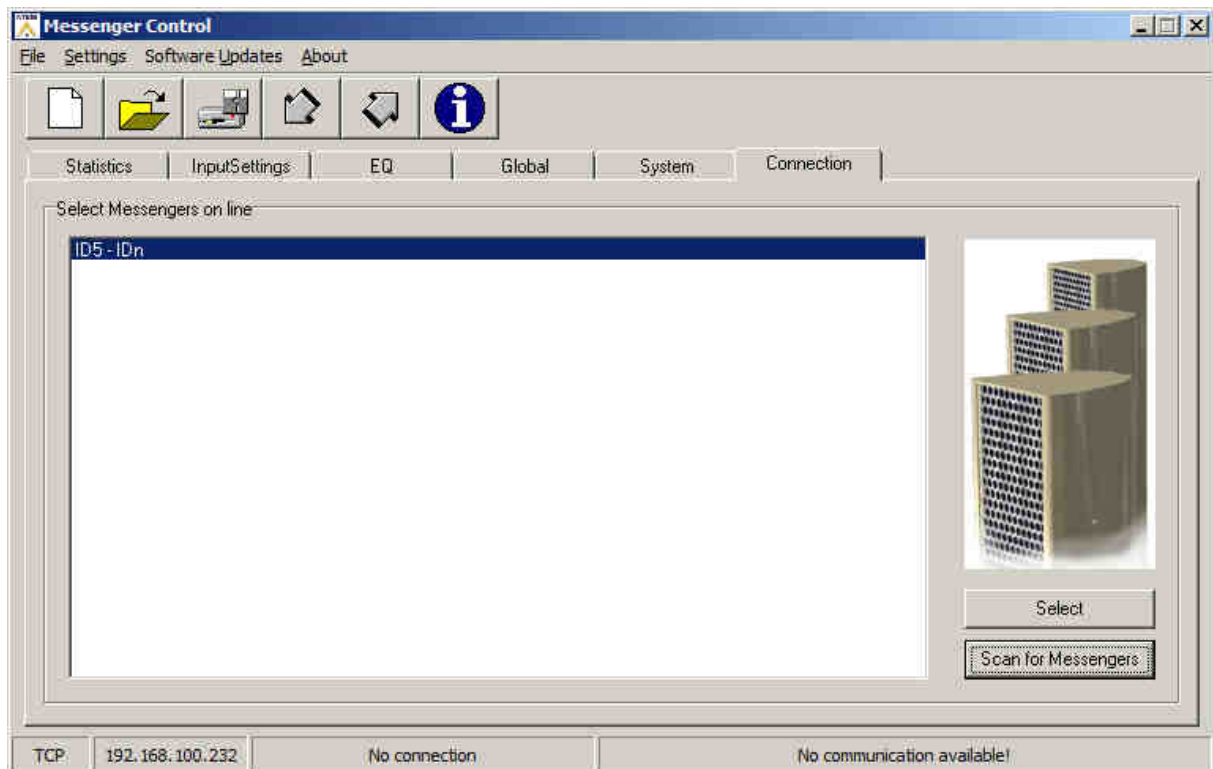


Search again select the Messenger and click the connect button



Close the search window

Go to the connection tab and click on scan for Messenger



Click on the found Messenger and click the select button

Ateis Europe BV - Sydneystraat 42 - 3047 BP ROTTERDAM – Netherlands
Phone +31 (0)10 2088690 - Fax +31 (0)10 2088699

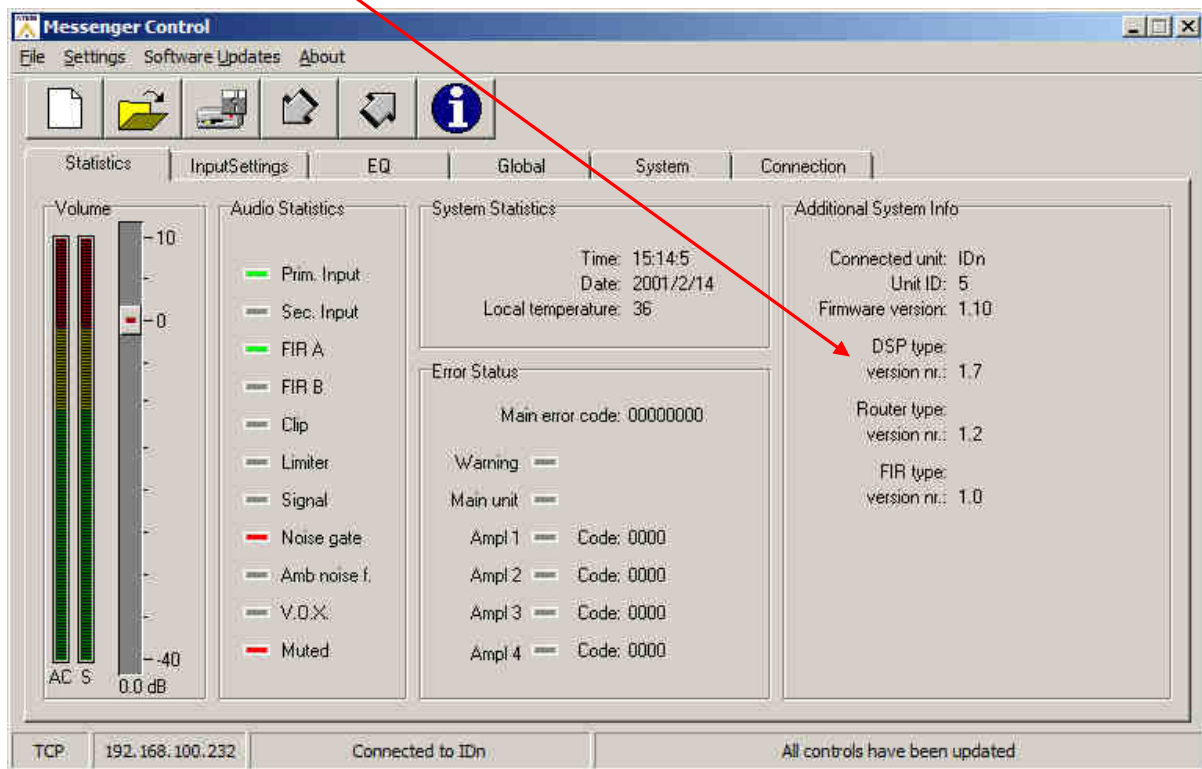
Messenger G2 network connection

M-Control version 1.34 and higher



Go to the statistics tab and check the DSP version.

This must be version 1.7 or higher



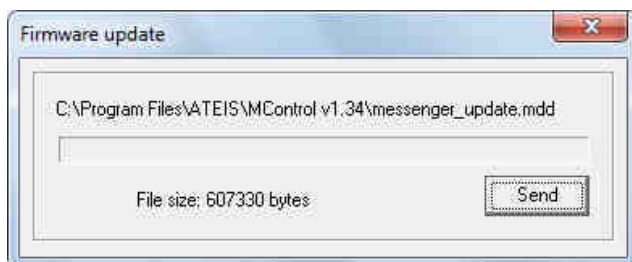
If not version 1.7 or higher open Software Updates and upgrade the firmware.

Search file: messenger_update.mdd

This file is in the directory where the M-Control program is installed.

("C:\Program Files\ATEIS\MControl v1.xx")

This screen appears



Click on send

Be aware of the fact that there is a possibility all the settings in the Messenger are lost after an update. Be sure to store the settings on your computer before upgrading the Messenger. Open in the left top corner the menu File and click on Save all settings.

Ateis Europe BV - Sydneystraat 42 - 3047 BP ROTTERDAM – Netherlands

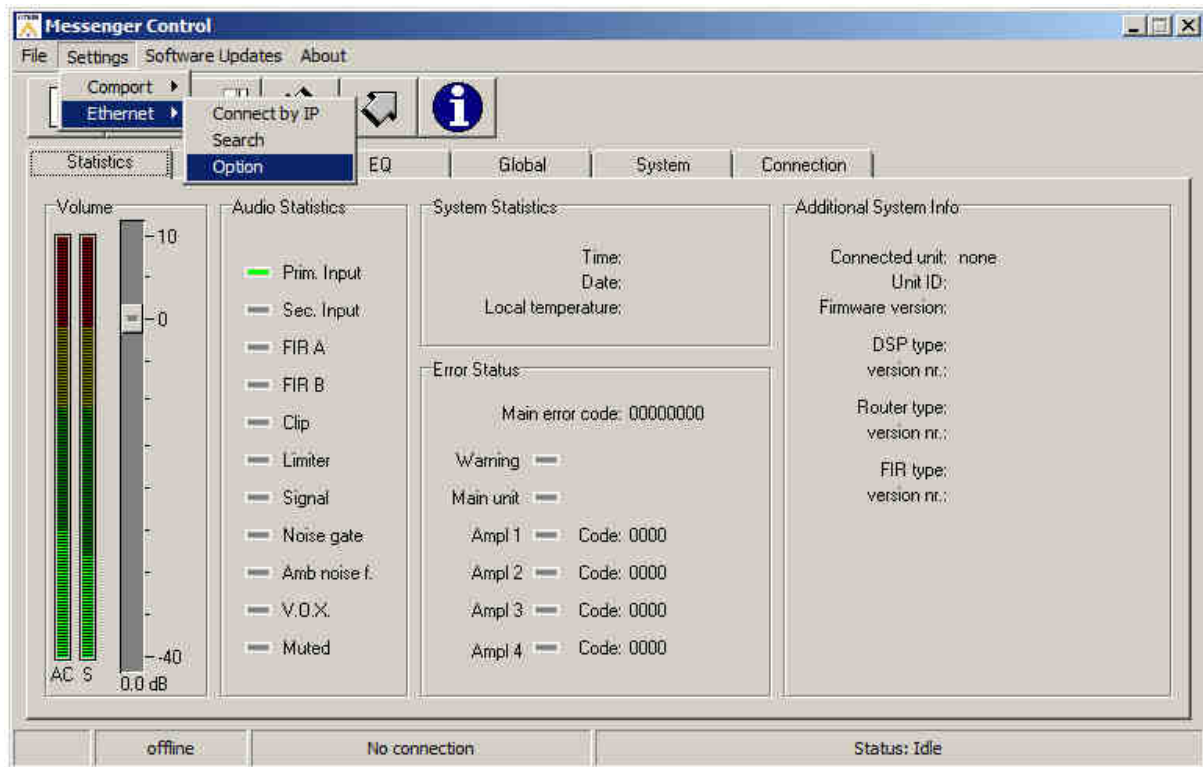
Phone +31 (0)10 2088690 - Fax +31 (0)10 2088699

Messenger G2 network connection

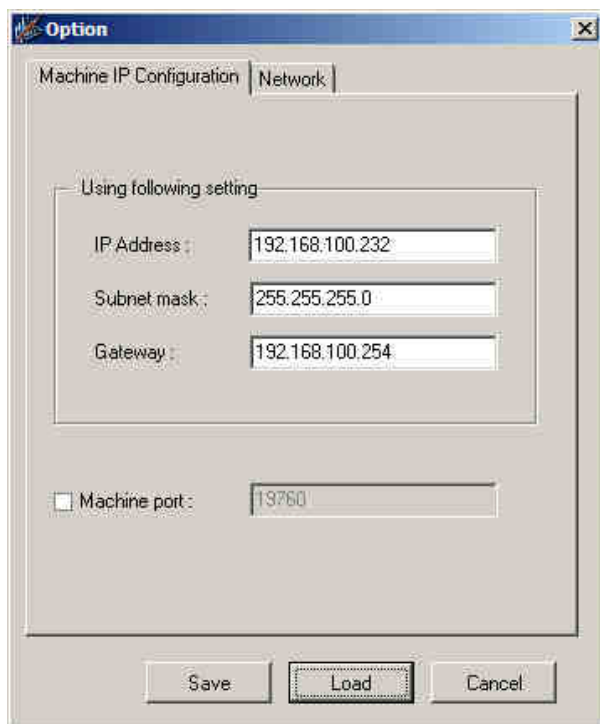
M-Control version 1.34 and higher



Here follow the possibilities for Ethernet settings



Clicking the Load button displays the current IP setting of the Messenger.
After changing the IP settings click the Save button to store the new IP settings



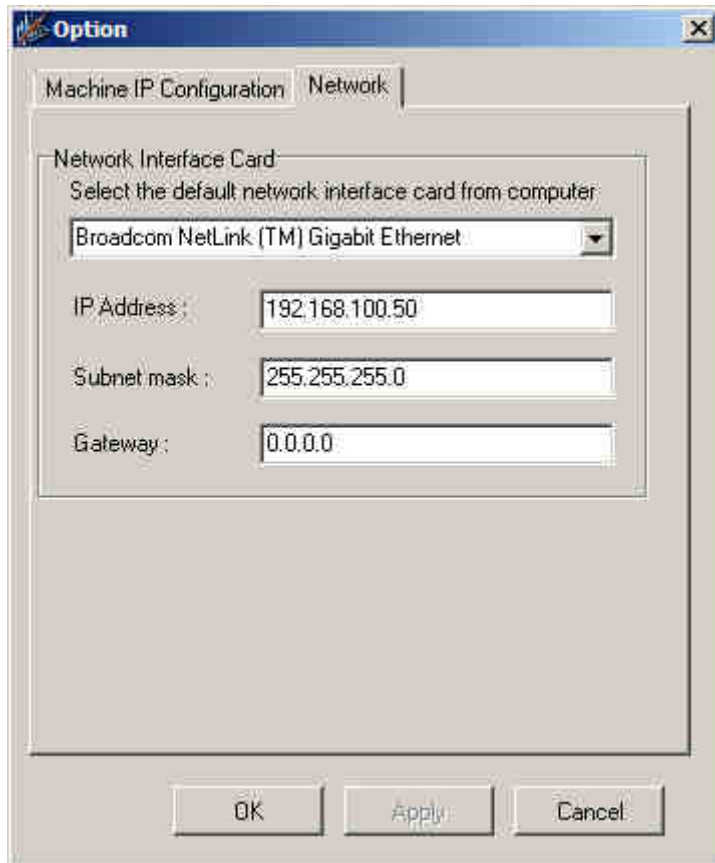
Ateis Europe BV - Sydneystraat 42 - 3047 BP ROTTERDAM – Netherlands
Phone +31 (0)10 2088690 - Fax +31 (0)10 2088699

Messenger G2 network connection

M-Control version 1.34 and higher



Overview of the network connection and the possibility to choose different network interfaces (if present) to connect to.



*For setting up the other matters (Lobes, audio, EQ, etc.) see the Messenger manual.
The settings are stored automatically in the Messenger when working with
M-Control version 1.34 or higher.*

If further information is needed do not hesitate to contact us.

Ateis Europe BV - Sydneystraat 42 - 3047 BP ROTTERDAM – Netherlands
Phone +31 (0)10 2088690 - Fax +31 (0)10 2088699