



Terracom-AMP

Professionnal In&Out IP Audio Terminal
with 2x15W amplification



Quick Start Guide



Thank you for choosing ATEIS Terracom device. We hope you will enjoy using this exciting piece of technology as much as we enjoy developing and building it. This guide will help you get started fast, by explaining how to connect your PC to the device and create a basic configuration.

Please refer to the manual for any information regarding CEE or FCC declarations of conformity, electromagnetic compatibility, and for more complete instructions. The last version of the manual and this quick start guide are available on the Ateis web, www.ateis.com. You will find also more information of the whole Terracom range.

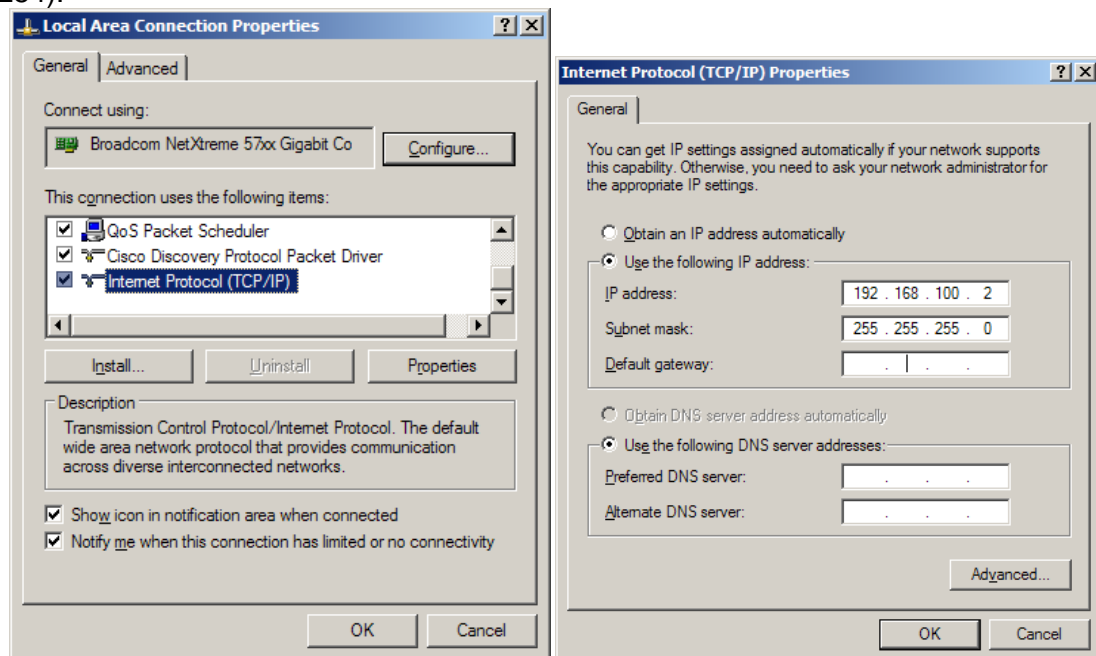
Connecting to your Terracom-AMP device.

Each Terracom unit comes loaded with a default configuration. Follow steps 1 to 8 for connecting to the embedded web server that enables you to modify the settings.

1- Assign IP address to PC

Each Terracom device is shipped from the factory with a default IP address of 192.168.100.1

Then, your PC must have an IP address like 192.168.100.x (x is a value between 2 & 254).



2- Power connection

Thanks to the Power over Ethernet (POE) 48V technology, your TERRACOM device can be powered through the Cat-5 cable. For that you will need a POE switch. Otherwise, your Terracom device can be powered by an external DC-JACK 24V-0,25A power supply. The front panel "POWER" LED will now remain green.

3- Network connection

Use a straight Cat-5 cable to link your PC network card to the device. Open your favourite web browser (we recommend Mozilla Firefox). You will find on the TERRACOM screen its IP address. Type this IP address into the address bar. You will be asked for a login. The default settings are: login: admin / password: admin. You can now visualize the web pages of the TERRACOM.

4- Assign IP address to the TERRACOM device

You can now change the IP address of your device: *Setup ->Basic Setting ->Network*

| Network | |
|-------------|---|
| IP Address | 192.168.10.216 |
| Subnet Mask | 255.255.255.0 |
| Gateway | 192.168.10.200 |
| DNS | 8.8.8.8 <input checked="" type="checkbox"/> |

Reboot.

Notice that you might have to change again the IP settings of your PC network card to be in the same network mask as the new IP address of your TERRACOM.

To avoid conflict issues that occur when connecting multiple TERRACOM devices with the same IP number, be sure to only connect one TERRACOM device at a time to the Ethernet switch when assigning IP addresses.

5- SIP server setting

a- With SIP server

TERRACOM streaming can be done using a SIP Server. *Setup ->Basic Setting ->SIP*

Please enter the settings of your SIP server.

| SIP | |
|-------------------------|---|
| Username | france-amp-1 |
| Firewall Traversal Mode | <input checked="" type="radio"/> SIP Server <input type="radio"/> Terra Net |
| SIP Server IP | 111.252.93.128 |
| SIP Port | 5060 |
| RTP Port | 6912 |
| Audio Codec | L16 |

You can now check on your SIP server, that the TERRACOM device is on-line.

b- Without SIP server

If you don't have a SIP server, you have to set up like this:

Firewall Traversal Mode -> Terra Net

WAN IP = "IP Address"

SIP Port -> 5060

RTP Port -> 6912

Paging Mode -> IGMP

6- List of devices

Add now to the TERRACOM device, the list of devices you want to be able to call.

Setup ->Device List ->Add New Device...

In the URI, write [name_device@XXX.XXX.XXX.XXX:YYYY](#)

For a SIP call: XXX.XXX.XXX.XXX = the SIP server IP address

For a direct call: XXX.XXX.XXX.XXX= the IP address of the device we want to call.

YYYY= the SIP port number you have entered in the SIP settings.

7- Audio output Matrix

In the TERRACOM-AMP, there is a priority table. Thanks to this table, you will decide which inputs (SIP call, playlist stored on the USB key, IP streams, mic/line inputs) will be played on the output.

ATEIS Web Management
TERRA-AMP v1.0.17.7, uptime: 3:23:37
france-amp-1@192.168.10.218:5060

Setup Update Status About

Basic Setting Device List Function Libraries Audio Matrix Control Input Playlist Recording Codec Registers System Time

| Input | Mode | Priority (1-5) | Output 1 | Output 2 | Stream Out IP | TYPE | Source Control | Position | Volume Control |
|---------------|------|----------------|-------------------------------------|-------------------------------------|----------------|------|----------------|----------|----------------|
| SIP | Mono | 1 | <input checked="" type="checkbox"/> | <input checked="" type="checkbox"/> | | | | | WEB 35 |
| MIC IN | Mono | 7 | <input checked="" type="checkbox"/> | <input checked="" type="checkbox"/> | 239.240.100.9 | N/A | fixed | -- | IN2 |
| LINE IN | Mono | 7 | <input checked="" type="checkbox"/> | <input checked="" type="checkbox"/> | 239.240.100.10 | N/A | fixed | -- | IN2 |
| USB | Auto | 7 | <input checked="" type="checkbox"/> | <input checked="" type="checkbox"/> | 239.240.100.11 | N/A | fixed | -- | IN2 |
| Network Audio | Auto | 7 | <input checked="" type="checkbox"/> | <input checked="" type="checkbox"/> | | | | | IN2 |

| Network Audio | IGMP IP | TYPE | Source Control | Position | x |
|------------------------|---------------|------|----------------|----------|---|
| Network Audio Source 1 | 239.240.100.1 | N/A | fixed | -- | |
| Network Audio Source 2 | 239.240.100.2 | N/A | fixed | -- | |
| Network Audio Source 3 | 239.240.100.3 | N/A | fixed | -- | |
| Network Audio Source 4 | 239.240.100.4 | N/A | fixed | -- | |
| Network Audio Source 5 | 239.240.100.5 | N/A | fixed | -- | |
| Network Audio Source 6 | 239.240.100.6 | N/A | fixed | -- | |
| Network Audio Source 7 | 239.240.100.7 | N/A | fixed | -- | |
| Network Audio Source 8 | 239.240.100.8 | N/A | fixed | -- | |

Save Cancel

COPYRIGHT © 2011 ATEIS International. ALL RIGHTS RESERVED.

8- How to generate an IP Call

With the Terracom-AMP, you can also generate an IP stream. You can add to the TERRACOM device a list of function you would like to link to TTL inputs or RAC devices, for example a Call: *Setup ->Function Libraries*

Now in the Control Input, you can link a function to a Control input (RAC or TTL input): *Setup ->Control Input*

Don't forget to calibrate the inputs: *Setup ->Control Input ->CB*

For technical support please contact your supplier

ATEIS EUROPE BV

Sydneystraat 42 - 3047BP ROTTERDAM - NETHERLANDS - Phone +31 (0)10 2088690 - Fax +31 (0)10 2088699
www.ateis-europe.com - info@ateis-europe.com

ATEIS
ATEIS Europe B.V.
DELIVERING YOUR MESSAGE